



ASPIRE RESIDENTIAL



98 Elm Grove
Worthing BN11 5LJ
£280,000

**Two/Three Bedroom Terraced
House**

**Walking Distance To West Worthing
Train Station**

No Forward Chain

Local Shops

EPC D

Off Road Parking

Aspire Residential is delighted to bring to the market this two/three bedroom mid terraced family home in West Worthing. This property is ideally located within close proximity of local shops, schools and a mainline train station. Benefits include off road parking, a suitable size family garden and no forward chain.



Entrance Hall

Radiator, Carpets and stairs to landing.

Lounge 10' 10" x 10' 6" (3.30m x 3.20m)

Double glazed bay window to front aspect. Radiator. Telephone and tv points. Carpets.

Dining Room 10' 10" x 10' 4" (3.30m x 3.15m)

Radiator. Carpets. Entrance to Study.

Study 17' 9" x 5' 0" (5.41m x 1.52m)

Double glazed doors to garden. Radiator. Wood effect flooring.

Kitchen 18' 11" x 7' 3" (5.76m x 2.21m)

Double glazed door to garden. Under stairs storage cupboard. Matching range of modern wall and base units. Integrated oven with four ring gas hob. Space for fridge freezer, washing machine and dishwasher. Single sink with mixer taps inset to worktop. Breakfast bar.

Bedroom One 18' 11" x 11' 11" (5.76m x 3.63m)

Double glazed window to front aspect. Two double built in wardrobes. Radiator. Carpets.

Bedroom Two 10' 6" x 8' 5" (3.20m x 2.56m)

Double glazed window to rear. Radiator. Carpets.

Bedroom Three 9' 3" x 7' 4" (2.82m x 2.23m)

Double glazed window to side aspect. Radiator. Wood effect flooring.

Bathroom

Double glazed window to rear aspect. Walk in corner shower. Push flush lower level wc. Wall mounted hand basin with storage underneath. Heated towel rail. Tiled walls. Vinyl flooring.

Garden

Low level decking for dining. Paving providing a footpath to rear of the garden where there is a small lawned area and raised patio for additional dining space. Brick built shed.

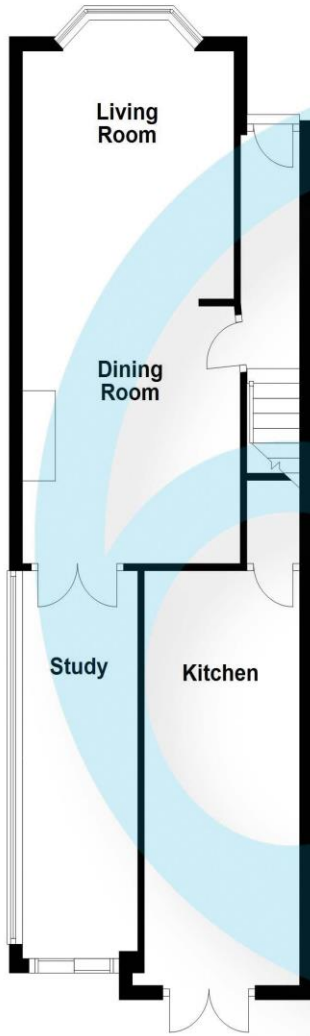
Off Road Parking

For a minimum of one car.





Ground Floor



First Floor

